



Firstsite

Firstsite
Open for you

Firstsite
Open for you

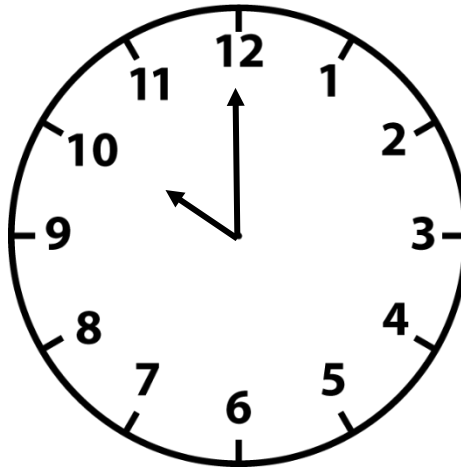
Hello! We look forward to welcoming you to Firstsite.

What is Firstsite?

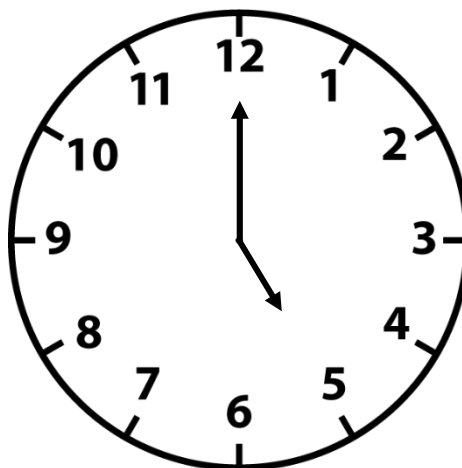
Firstsite is the East of England's contemporary art organisation. We are open all year featuring exhibitions, films, workshops, and events to encourage imagination, creativity, and conversations about the arts.

On Tuesday, Wednesday and Sunday

Firstsite opens at 10:00am.

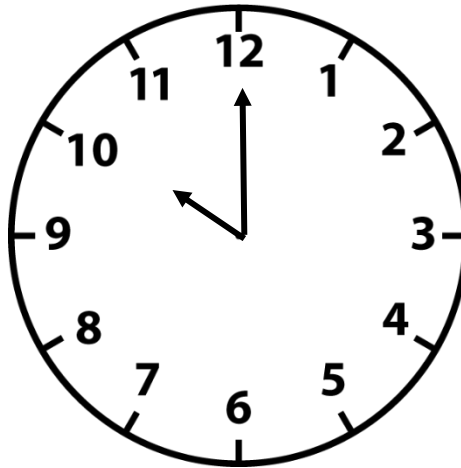


Firstsite closes at 5:00pm.

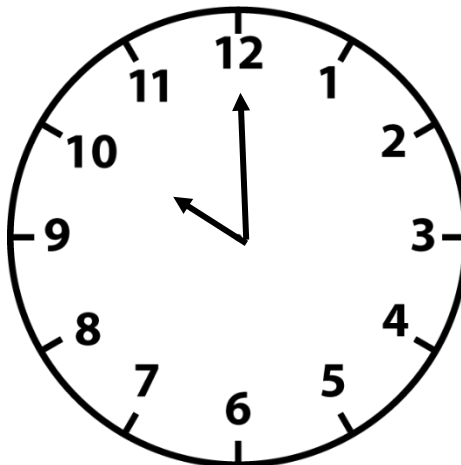


On Thursday, Friday and Saturday

Firstsite opens at 10:00am.



Firstsite closes at 10:00pm.



On Mondays, Firstsite is closed.

Firstsite's exhibitions sometimes change. You can find out which exhibitions are open when you visit by visiting our website:

www.firstsite.uk/event_categories/exhibitions

Some exhibitions have sounds or are differently lighted. You can ask at the welcome desk when you arrive or by contacting us before you visit to find out which exhibitions have sound.

Telephone: 01206 713700

Email: info@firstsite.uk

Ear defenders are available to borrow from the welcome desk on a first come first served basis.

This is what Firstsite looks like from the outside.



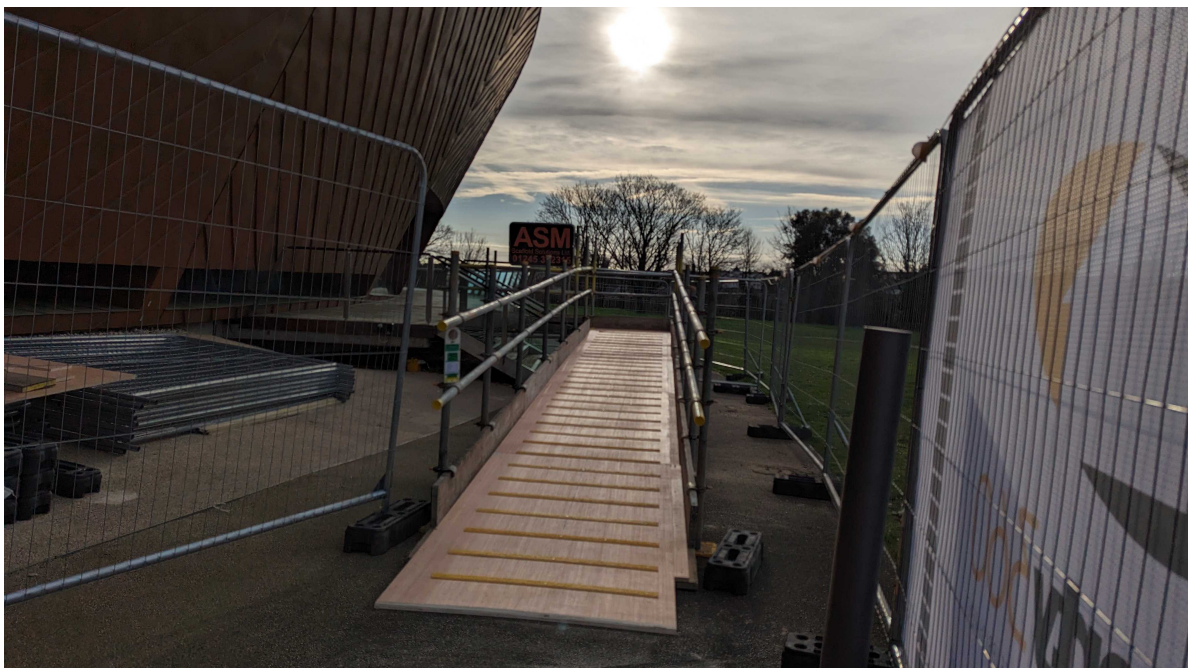
The temporary entrance to Firstsite is around the back of our building, via the Berryfield Lawn



Follow the building round to the entrance at the back.



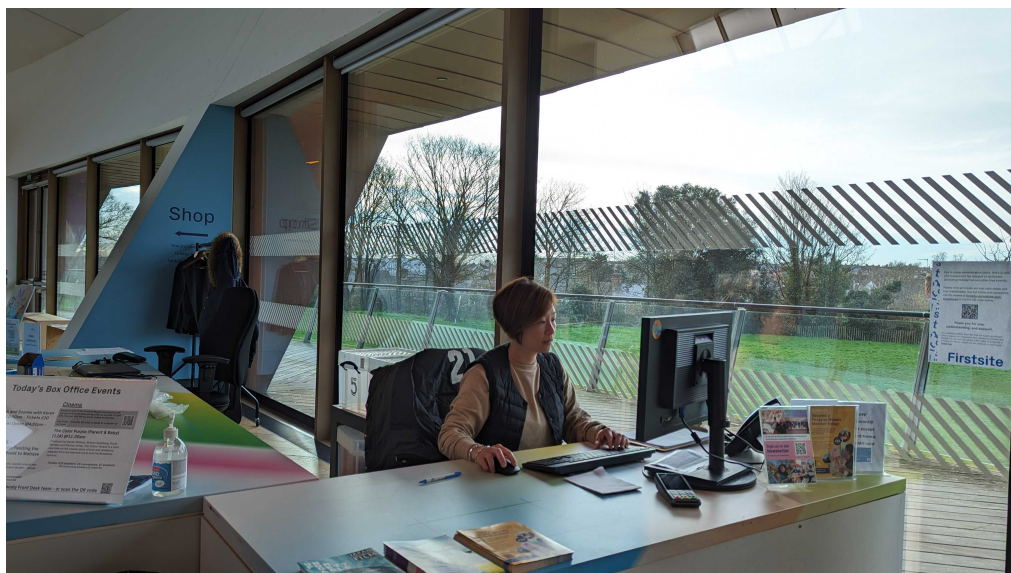
There is a ramp to provide step-free access.



The temporary entrance will bring you to the centre of Firstsite.



This is our temporary Welcome Desk.



At the front desk **Visitor Assistants** can be asked questions about Firstsite. Tickets for events and cinema can be booked here. Ear defenders can be collected from the front desk.

This is the Shop.

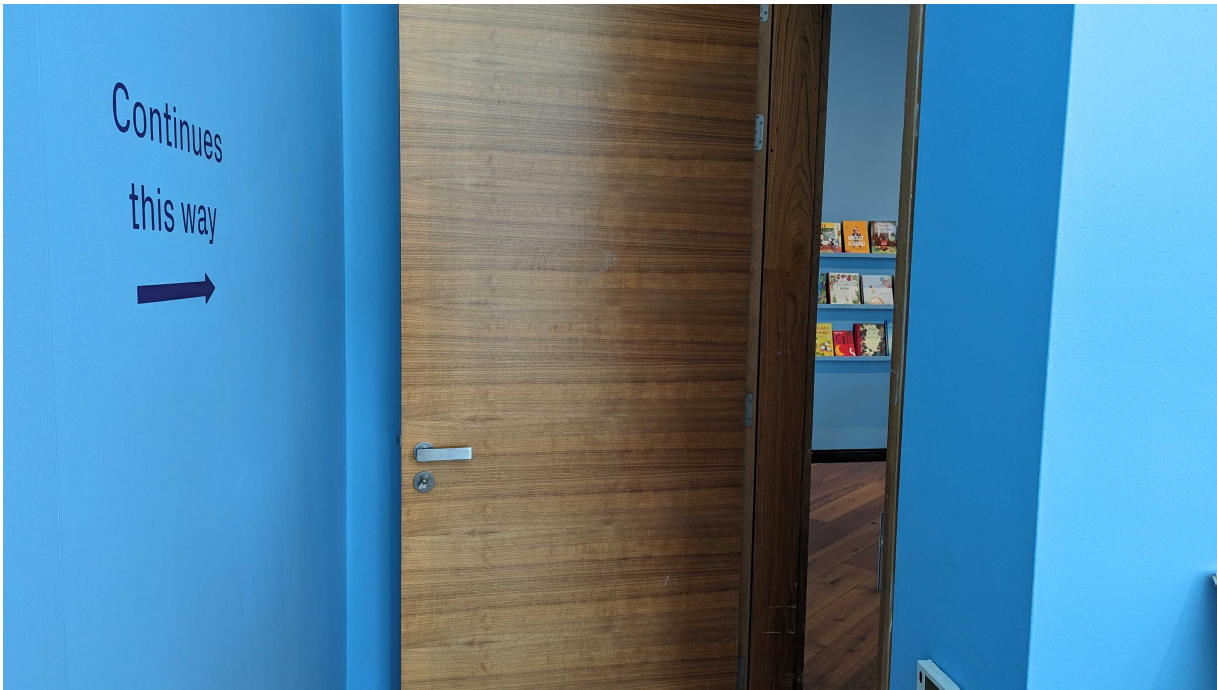


The shop is currently located in the Mosaic Space. Just opposite the temporary entrance and the Welcome Desk.

The entrance to the shop is through the archway.

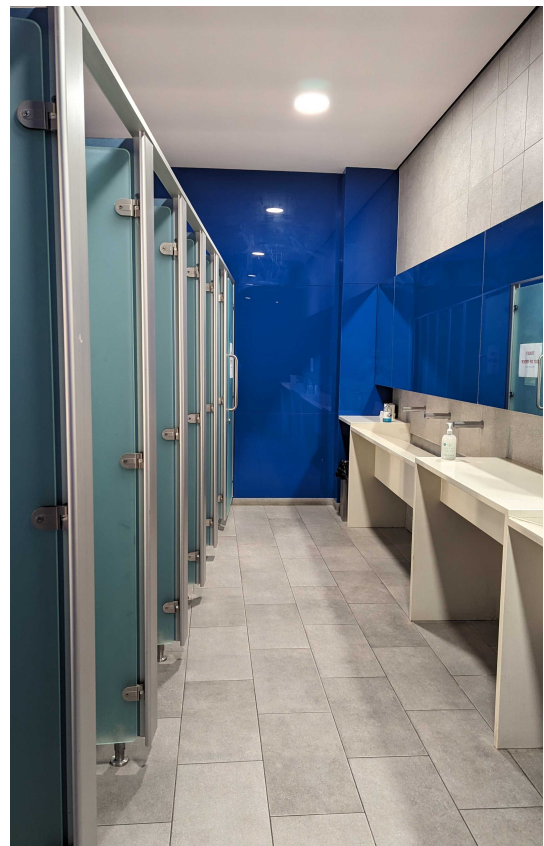


The shop has glass cabinets around the edge. There is a Roman mosaic in the floor called **The Berryfield Mosaic**.



Through the doors either side of back wall of the Mosaic Space is the backroom. The shop continues here.

These are the toilets.



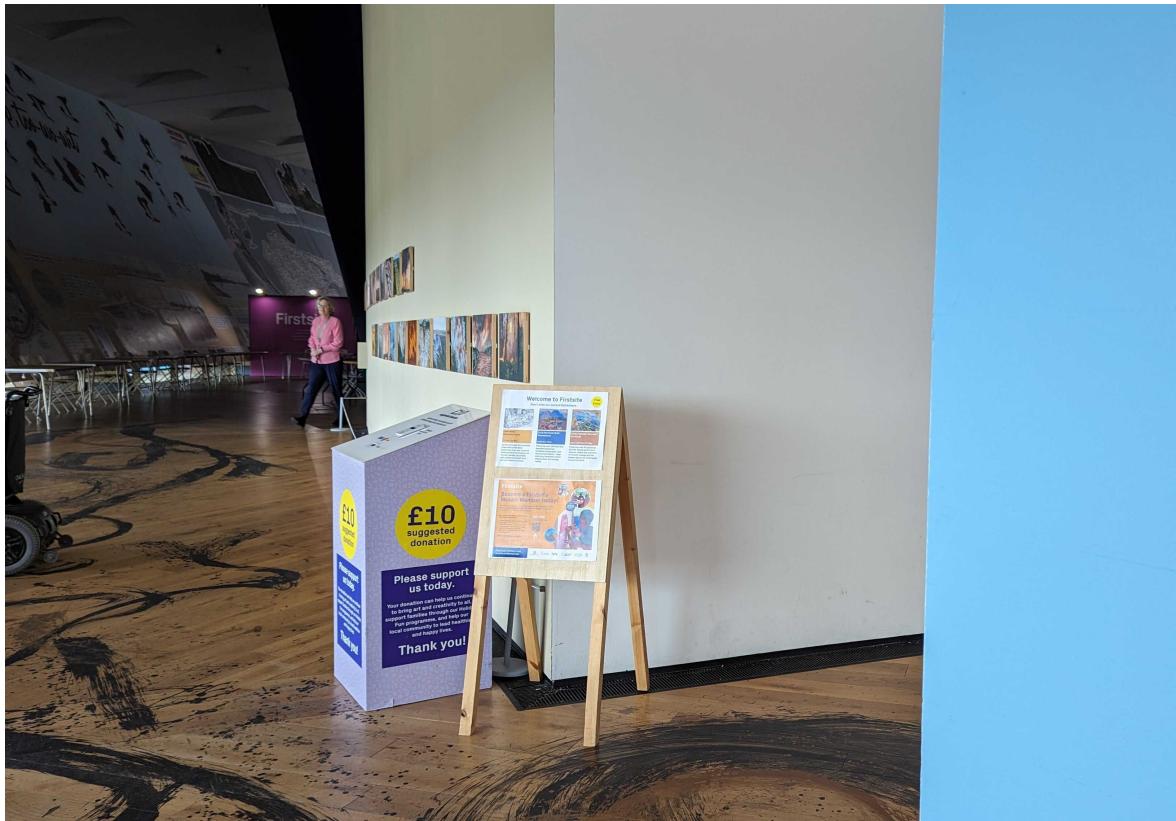
The first female **toilets** are on the left side of the shop.

These are the toilets.

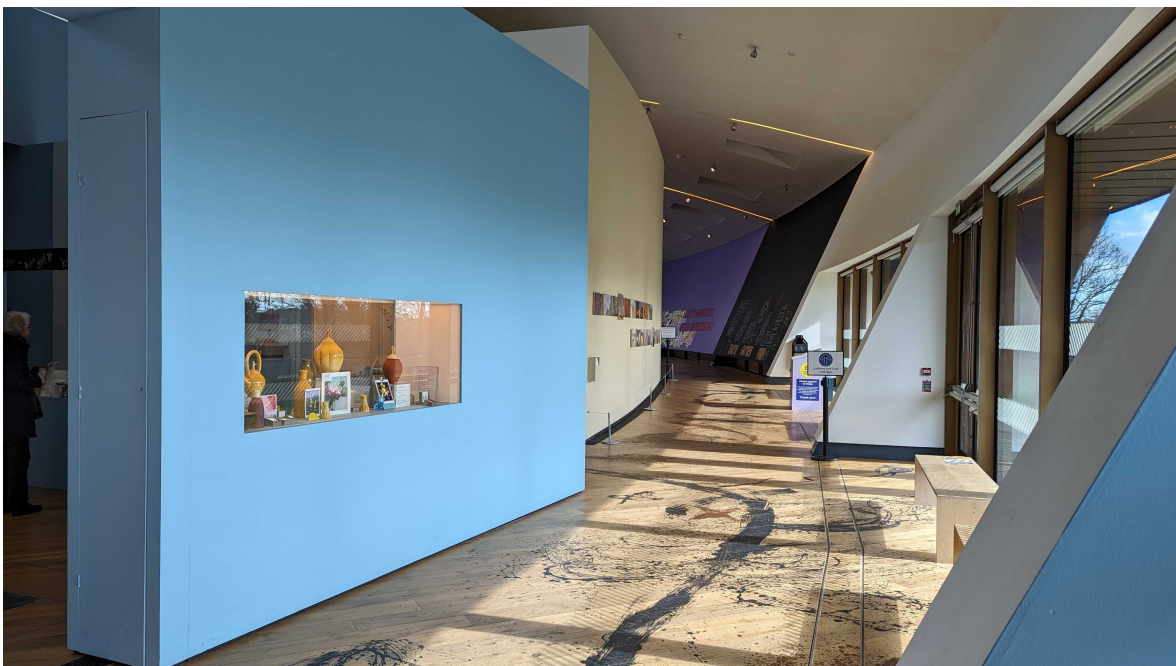


The first male and wheelchair accessible **toilets** are one left side of the shop, next to Studio 2. The toilets do not contain air dryers. There are more toilets as you follow the building round.

To see the cinema, artworks on the walls and to access more female toilets, follow the curve to the left from the shop.



To see the the exhibitions, visit the cafe and find more toilets, follow the curve to the right from the shop.



This is the Wall.



Beyond the shop on the left is **The Wall** where there is more work from temporary exhibitions.

Entrance to the Main Galleries.



Moving on from the wall, on the left is the entrance to the main gallery spaces.



Gallery 2.

Through the doorway is **Gallery 2**. This is our main exhibition space.



Gallery 2.



Gallery 1.



Through the gap on the left is the entrance to **Gallery 1.**



This is **Gallery 1.**

Entrance to Gallery 4.



The entrance to **Gallery 4** is back out of **Gallery 3** and through the glass doors from **Gallery 2**.

Gallery 4.



This is **Gallery 4**. This room may be colder than other rooms due to temperature controls to protect artworks.

Leaving Gallery 4.



Leaving **Gallery 4** will bring you to the back of the gallery.

Entrance to the Café.



The entrance to the **Café** can be found up the slope outside the galleries at the back of the building.



Food and drink can be bought and eaten here. The café sometimes is noisy. Toilets are at the back of the café.

Sitting in the Café.



You can sit in the café.



Or you can sit outside on the decking through the two glass doors opposite the café counter.

Gallery exit along the curved wall.



The exit can be found along the curved wall opposite the shop, where you entered.

When visiting Firstsite...



You can take pictures, unless a sign says we can't.



You can ask any member of Firstsite staff for help. We wear different coloured lanyards with 'Firstsite' on them.

When visiting Firstsite...



In the gallery there are objects you can touch, and objects we can't touch to help protect artworks. If not sure ask a member of our staff who can tell you.



We can eat in the café or outside on the decking.

When visiting Firstsite...



We have touchscreens and tablets in the galleries to watch films and learn about artworks using headphones.



There are spaces where films and videos are played. Sometimes these films can be loud.

When visiting Firstsite...



Some galleries can be quite dark.



Some galleries can be quite light.

Thank you for visiting Firstsite.
See you soon!

