



Firstsite

Welcome to  
Firstsite!

- Exhibition
- Cinema
- Music
- Events
- Open
- Bar
- Cafe
- Shop
- Events

Firstsite

Firstsite  
Open  
10am - 5pm



# Hello! We look forward to welcoming you to Firstsite.

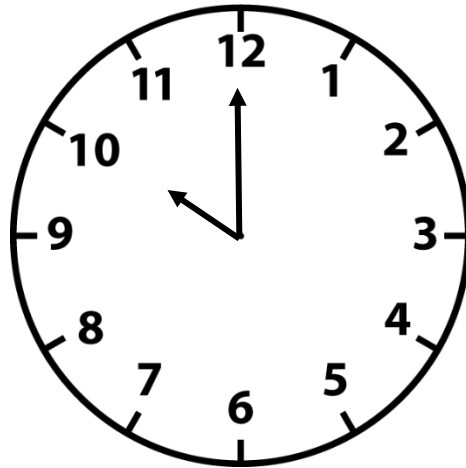
What is Firstsite?

Firstsite is the East of England's contemporary art organisation. We are open all year featuring exhibitions, films, workshops, and events to encourage imagination, creativity, and conversations about the arts.

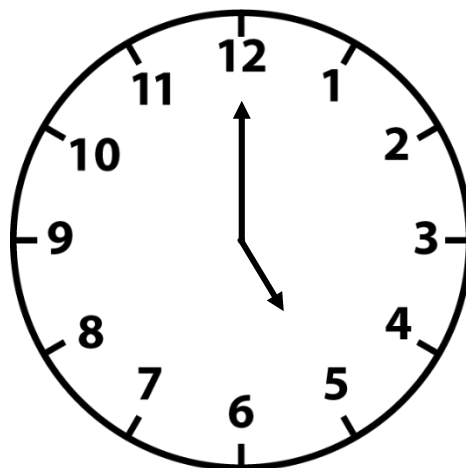


On Tuesday, Wednesday and Sunday

Firstsite opens at 10:00am.



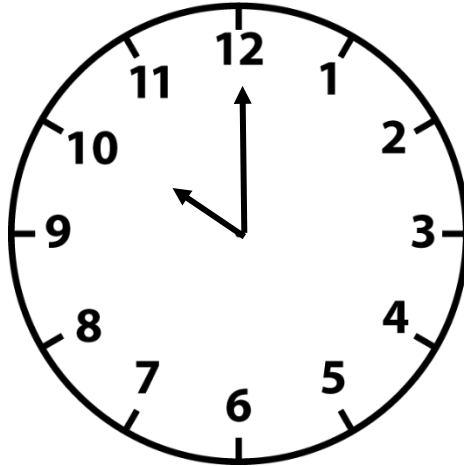
Firstsite closes at 5:00pm.



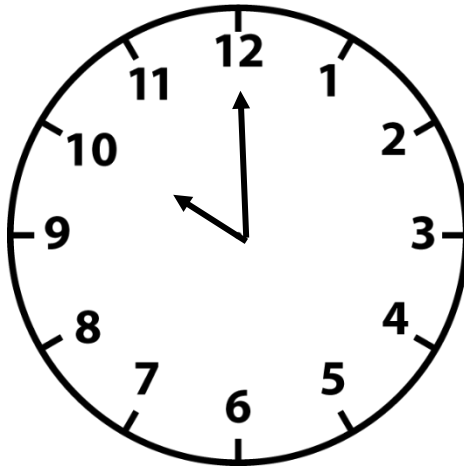


On Thursday, Friday and Saturday

Firstsite opens at 10:00am.



Firstsite closes at 10:00pm.



On Mondays, Firstsite is closed.



Firstsite's exhibitions sometimes change. You can find out which exhibitions are open when you visit by visiting our website:

[www.firstsite.uk/event\\_categories/exhibitions](http://www.firstsite.uk/event_categories/exhibitions)

Some exhibitions have sounds or are differently lighted. You can ask at the welcome desk when you arrive or by contacting us before you visit to find out which exhibitions have sound.

Telephone: 01206 713700

Email: [info@firstsite.uk](mailto:info@firstsite.uk)

Ear defenders are available to borrow from the welcome desk on a first come first served basis.



This is what Firstsite looks like from the outside.



The entrance to Firstsite is through the automatic doors.

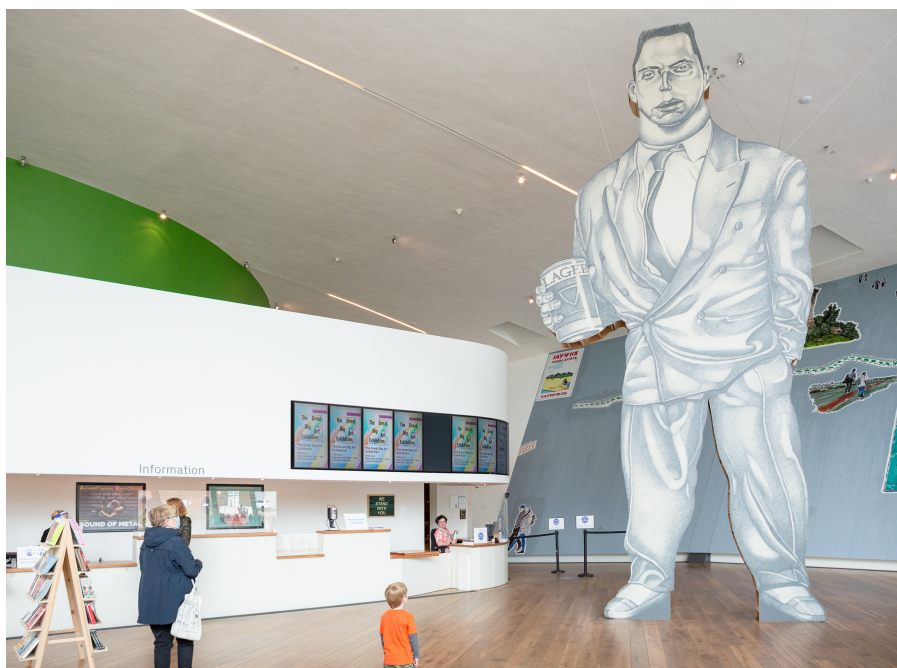




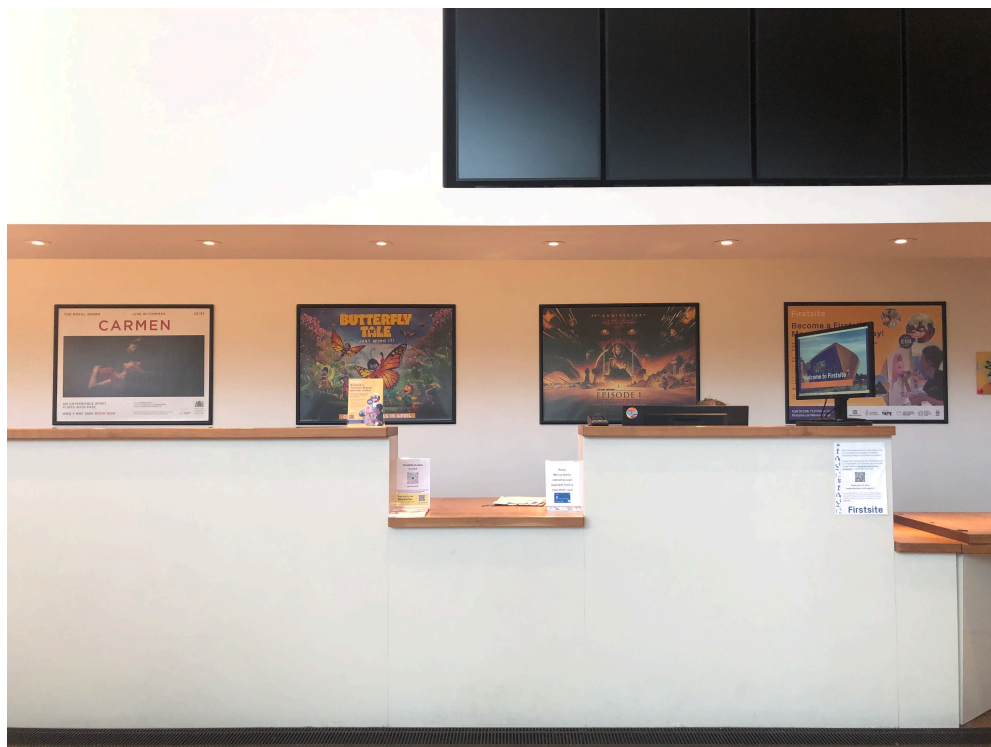
This is the Foyer.  
On the left is the shop.



To the right is a sculpture of a man.



# This is our Welcome Desk.



At the front desk **Visitor Assistants** can be asked questions about Firstsite. Tickets for events and cinema can be booked here. Ear defenders can be collected from the front desk.

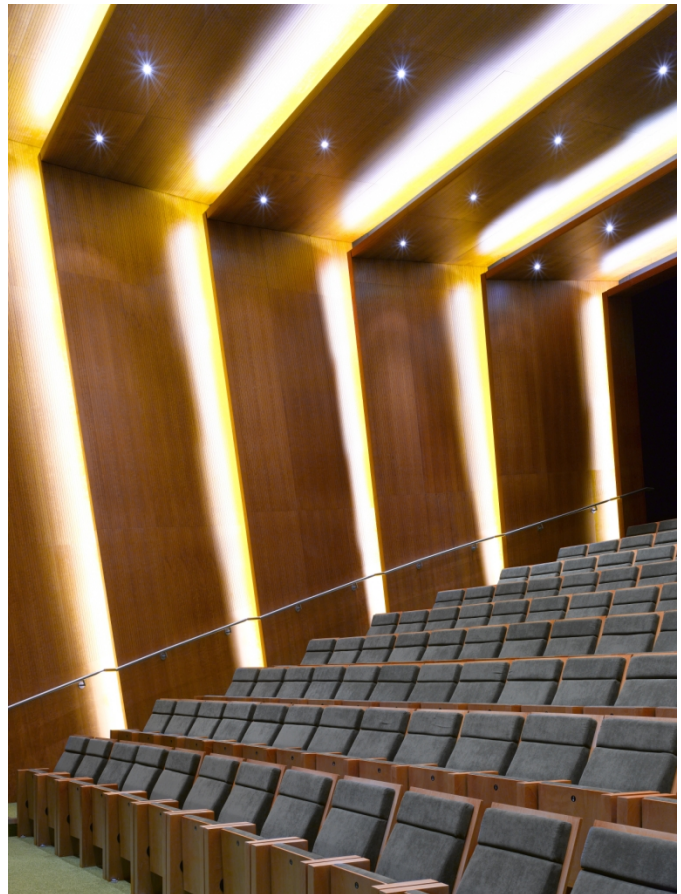


This is the curved wall.



To the right is the 140 metre **Curved Wall**. There is currently a large scale collage of enlarged images of drawings and signs across the wall.

This is the cinema.



To the left is a purple wall. This is the cinema.  
The path on the side leads to the main doors.



These are the toilets.



The first **toilets** are either side of the green curved cinema. Wheelchair accessible toilets are opposite the cinema. The toilets do not contain air dryers.

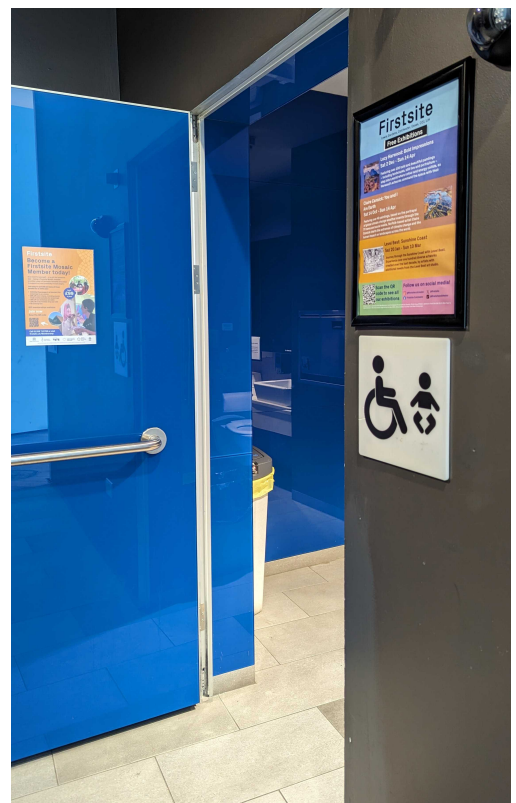
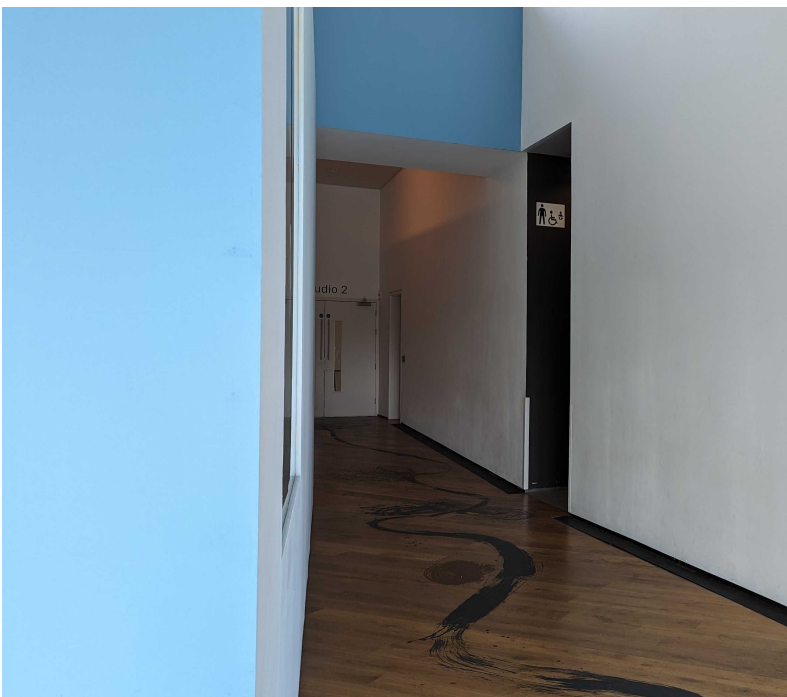
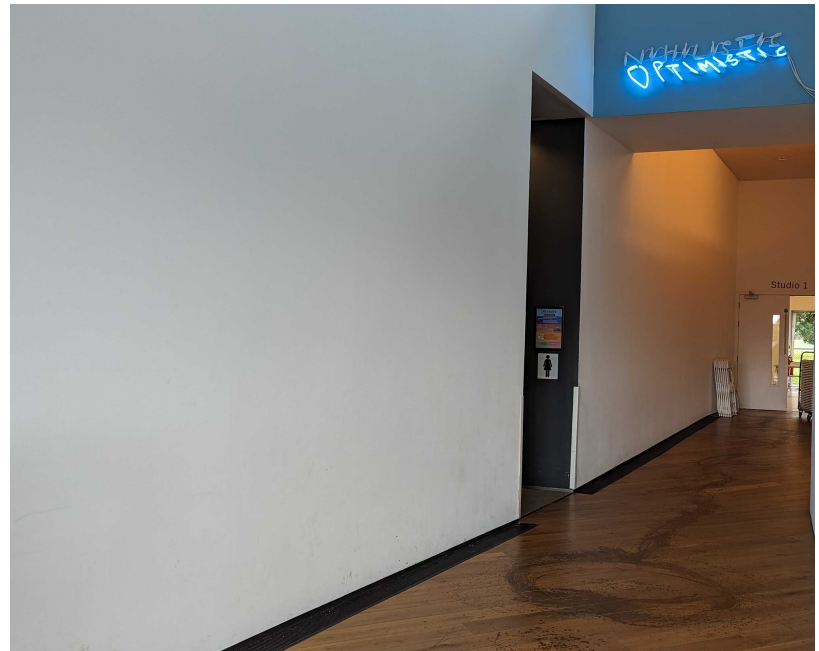


# This is the Mosaic Space



The first gallery called **The Mosaic Space** is on the left past the cinema. It is an opened space.

# These are the toilets after The Moasic Space.



The first male and wheelchair accessible **toilets** are one left side of the **Mosaic Space**, next to Studio 2. There are also more female toilets on the right. The toilets do not contain air dryers. There are more toilets as you follow the building round.



To see the the exhibitions, visit the cafe and find more toilets, follow the curve to the right from The Mosaic Space.





This is the Wall.



Beyond The Mosaic Space on the left is **The Wall** where there is more work from temporary exhibitions.

# Entrance to the Main Galleries.



Moving on from the wall, on the left is the entrance to the main gallery spaces.





Gallery 2, 3 and 4 are currently closed to install new exhibitions.



# Entrance to the Café.



The entrance to the **Café** can be found up the slope outside the galleries at the back of the building.



Food and drink can be bought and eaten here. The café sometimes is noisy. Toilets are at the back of the café.



# Sitting in the Café.



You can sit in the café.



Or you can sit outside on the decking through the two glass doors opposite the café counter.



Gallery exit along the curved wall.



The exit can be found along the curved wall opposite the shop, where you entered.



# When visiting Firstsite...



You can take pictures, unless a sign says we can't.



You can ask any member of Firstsite staff for help. We wear different coloured lanyards with 'Firstsite' on them.



# When visiting Firstsite...



In the gallery there are objects you can touch, and objects we can't touch to help protect artworks. If not sure ask a member of our staff who can tell you.



We can eat in the café or outside on the decking.



# When visiting Firstsite...



We have touchscreens and tablets in the galleries to watch films and learn about artworks using headphones.



There are spaces where films and videos are played. Sometimes these films can be loud.

# When visiting Firstsite...



Some galleries can be quite dark.



Some galleries can be quite light.



An aerial photograph of a modern building with a curved, golden, textured facade. The building's surface is composed of many small, rectangular panels with a fine, grid-like pattern. The building is surrounded by greenery and trees. In the background, there are other buildings and a paved area with some utility equipment.

Thank you for  
visiting Firstsite.

See you soon!