



Firstsite

Firstsite
The National Theatre
Southbank Centre
London SE1 9LQ

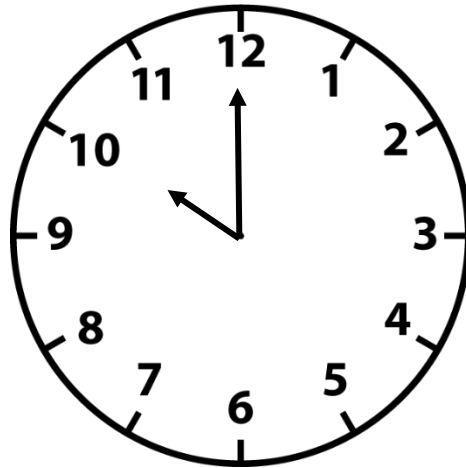
Hello! We look forward to welcoming you to Firstsite.

What is Firstsite?

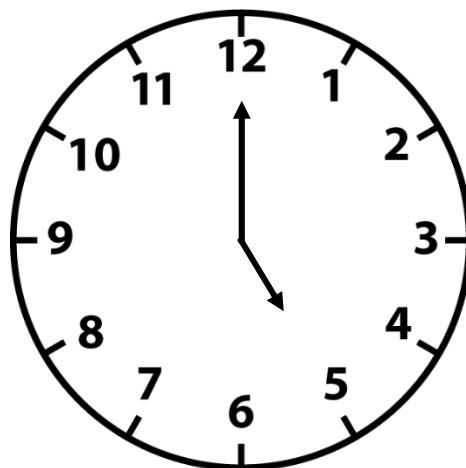
Firstsite is the East of England's contemporary art organisation. We are open all year featuring exhibitions, films, workshops, and events to encourage imagination, creativity, and conversations about the arts.

On Tuesday, Wednesday and Sunday

Firstsite opens at 10:00am.

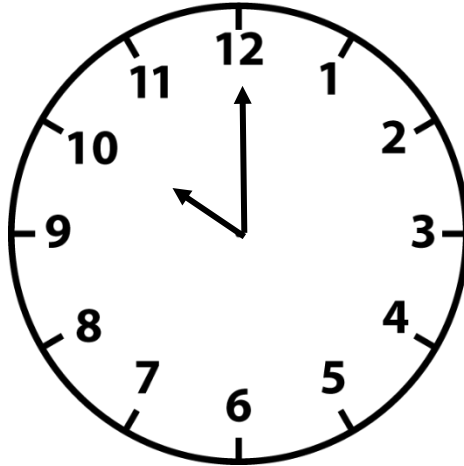


Firstsite closes at 5:00pm.

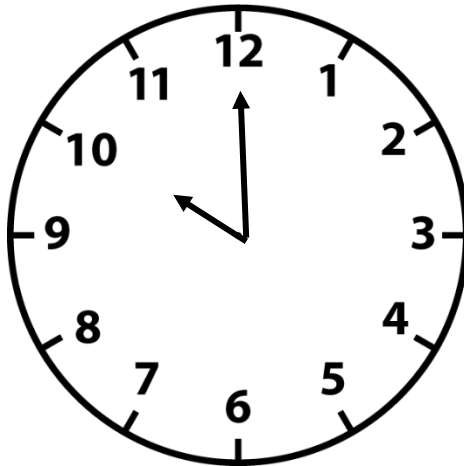


On Thursday, Friday and Saturday

Firstsite opens at 10:00am.



Firstsite closes at 10:00pm.



On Mondays, Firstsite is closed.

Firstsite's exhibitions sometimes change. You can find out which exhibitions are open when you visit by visiting our website:

www.firstsite.uk/event_categories/exhibitions

Some exhibitions have sounds or are differently lighted. You can ask at the welcome desk when you arrive or by contacting us before you visit to find out which exhibitions have sound.

Telephone: 01206 713700

Email: info@firstsite.uk

Ear defenders are available to borrow from the welcome desk on a first come first served basis.

This is what Firstsite looks like from the outside.



The entrance to Firstsite is through the automatic doors.



This is the Foyer.
On the left is the shop.



To the right is a sculpture of a man.

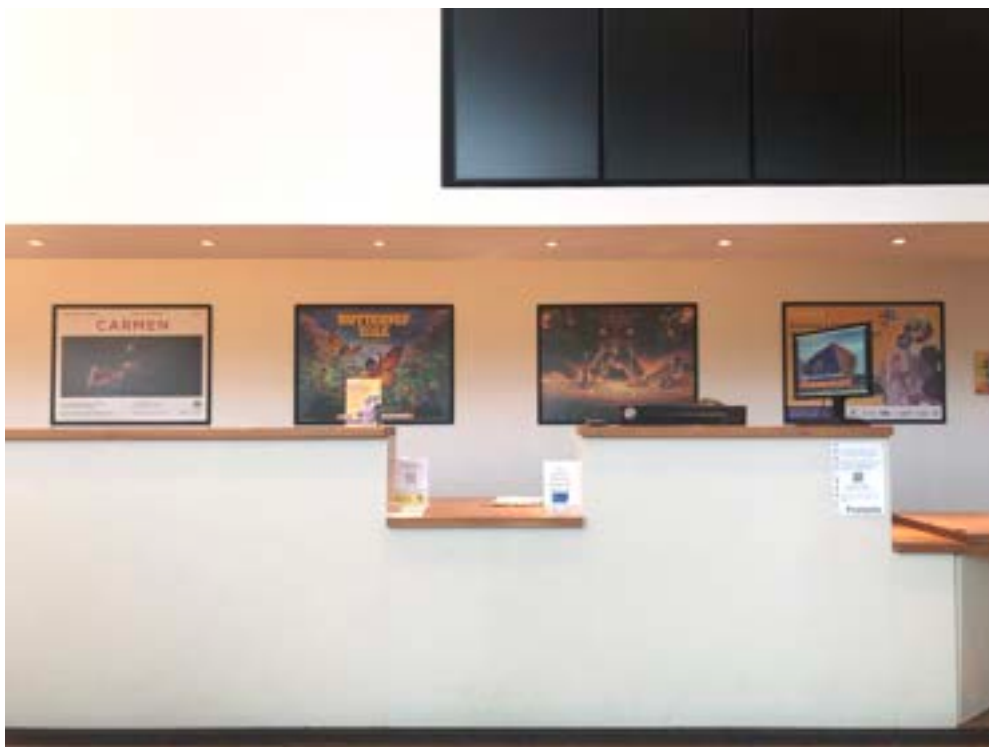


Behind the sculpture of a man is the Foyer Café.



Food and drink can be bought and eaten here. The Foyer café sometimes is noisy. You can sit and enjoy your meals in the Foyer café

This is our Welcome Desk.



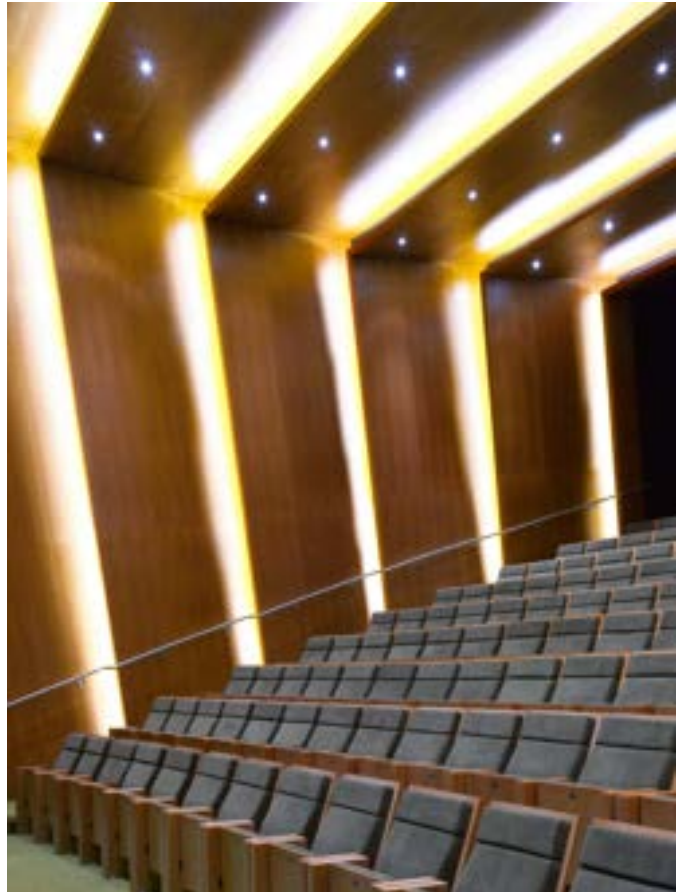
At the front desk **Visitor Assistants** can be asked questions about Firstsite. Tickets for events and cinema can be booked here. Ear defenders can be collected from the front desk.

This is the curved wall.



To the right is the 140 metre **Curved Wall**. There is currently a large scale collage of enlarged images of drawings and signs across the wall.

This is the cinema.



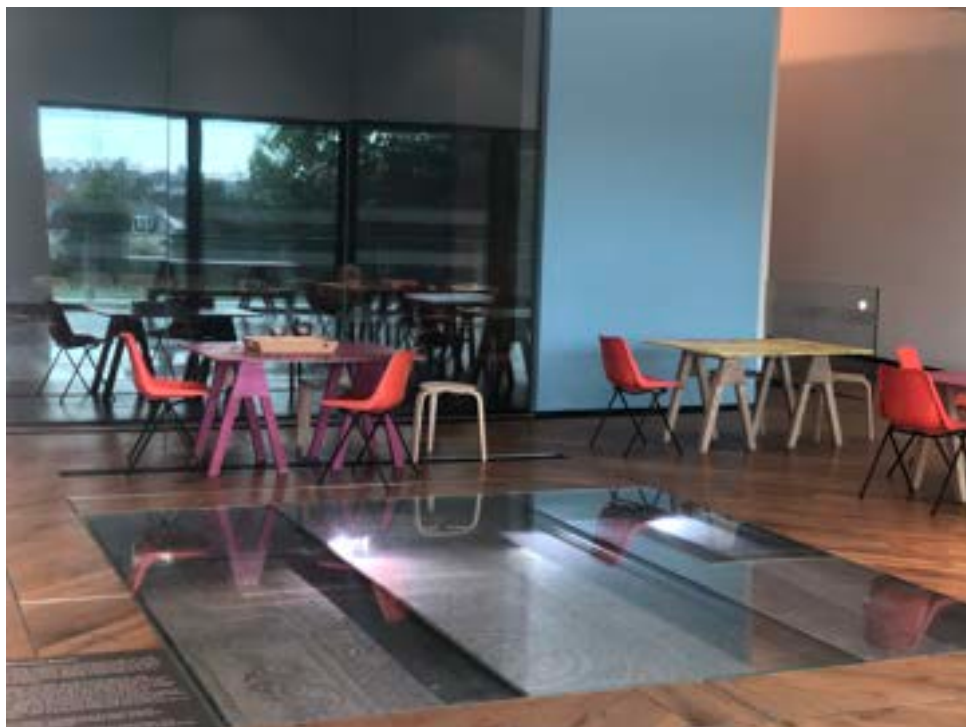
To the left is a purple wall. This is the cinema.
The path on the side leads to the main doors.

These are the toilets.



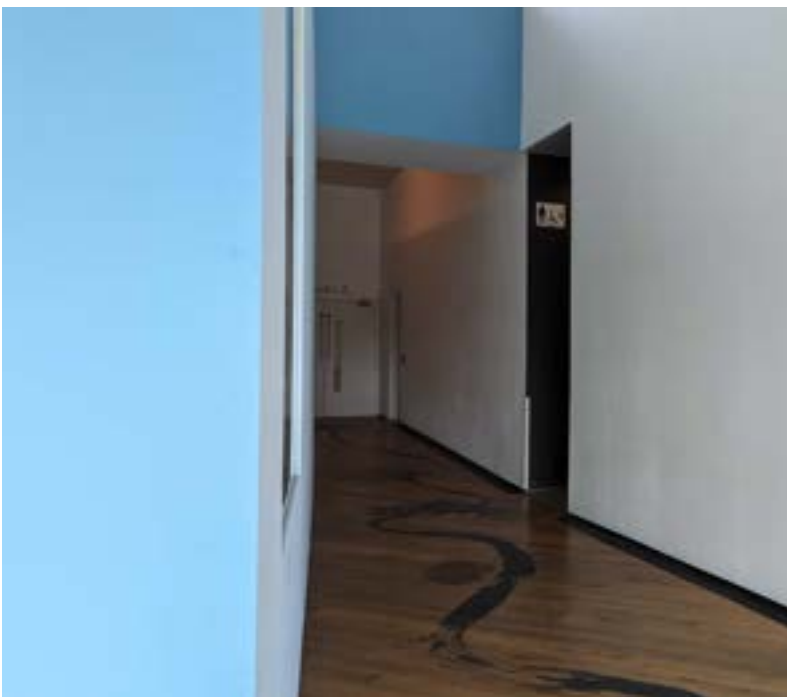
The first **toilets** are either side of the green curved cinema. Wheelchair accessible toilets are opposite the cinema. The toilets do not contain air dryers.

This is the Mosaic Space



The first gallery called **The Mosaic Space** is on the left past the cinema. It is an opened space.

These are the toilets after The Moasic Space.



The first male and wheelchair accessible **toilets** are one left side of the **Mosaic Space**, next to Studio 2. There are also more female toilets on the right. The toilets do not contain air dryers. There are more toilets as you follow the building round.

To see the the exhibitions and find more toilets,
follow the curve to the right from The Mosaic
Space.



This is the Wall.



Beyond The Mosaic Space on the left is **The Wall** where there is more work from temporary exhibitions.

Entrance to the Main Galleries.



Moving on from the wall, on the left is the entrance to the main gallery spaces.



Gallery 2.

Through the doorway is **Gallery 2**. This is our main exhibition space.



Gallery 2.



Gallery 1.



Through the gap on the left is the entrance to **Gallery 1**.



This is **Gallery 1**.

Entrance to Gallery 4.



The entrance to **Gallery 4** is back out of **Gallery 3** and through the glass doors from **Gallery 2**.

Gallery 4.



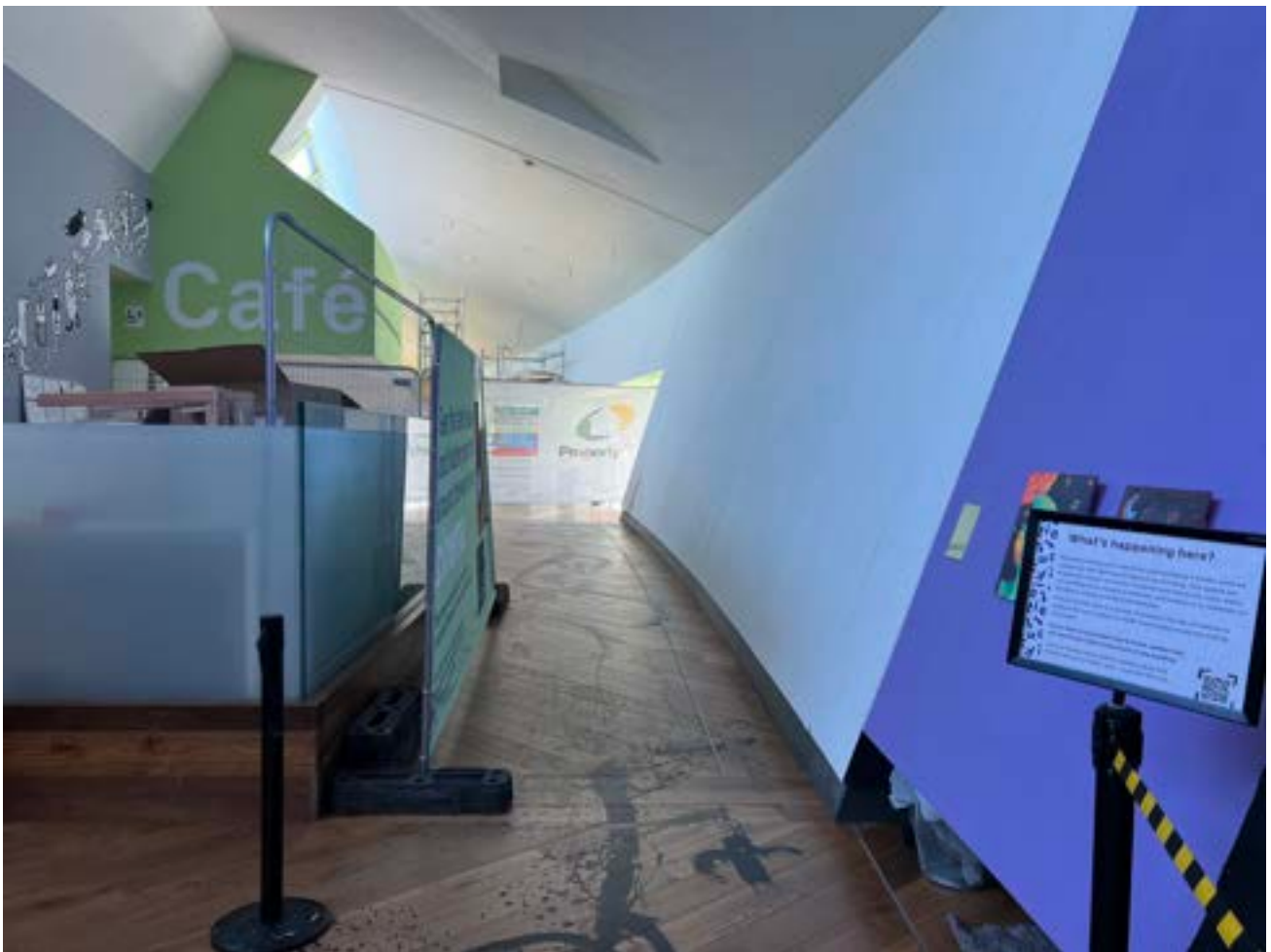
This is **Gallery 4**. This room may be colder than other rooms due to temperature controls to protect artworks.

Leaving Gallery 4.

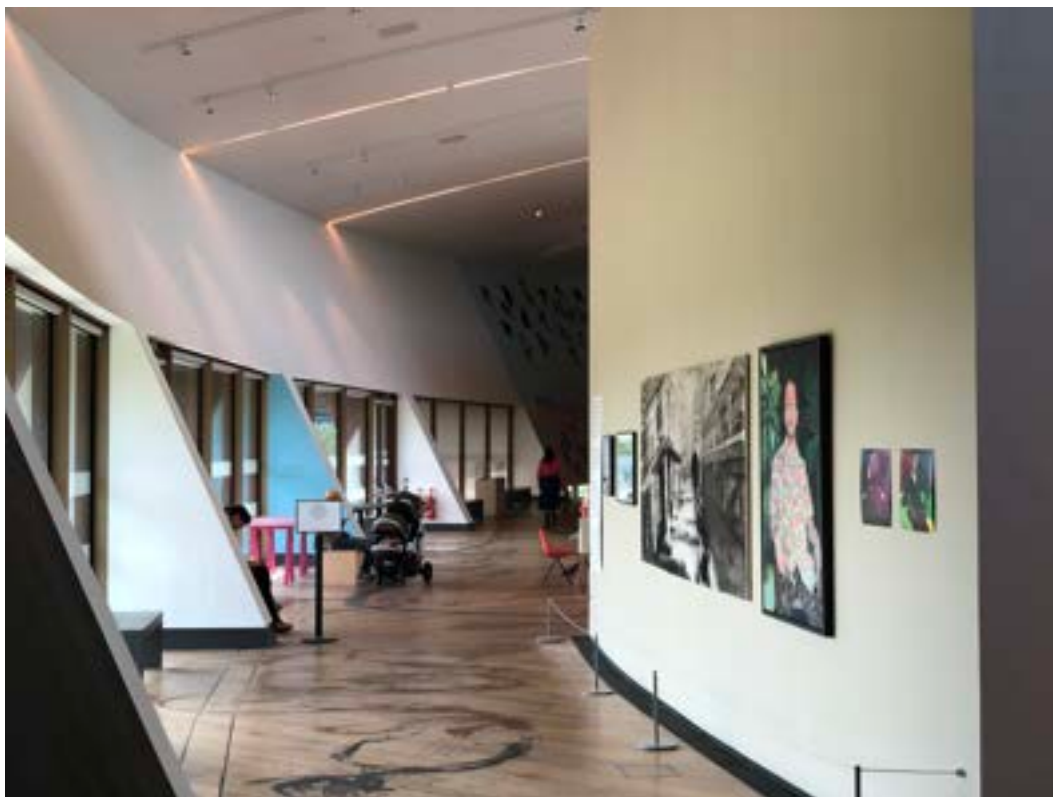


Leaving **Gallery 4** will bring you to the back of the gallery.

The Berryfield Café is temporarily closed for renovation.



Gallery exit along the curved wall.



The exit can be found along the curved wall opposite the shop, where you entered.

When visiting Firstsite...



You can take pictures, unless a sign says we can't.



You can ask any member of Firstsite staff for help. We wear different coloured lanyards with 'Firstsite' on them.

When visiting Firstsite...



In the gallery there are objects you can touch, and objects we can't touch to help protect artworks. If not sure ask a member of our staff who can tell you.



We can eat in the café or outside on the decking.

When visiting Firstsite...



We have touchscreens and tablets in the galleries to watch films and learn about artworks using headphones.



There are spaces where films and videos are played. Sometimes these films can be loud.

When visiting Firstsite...



Some galleries can be quite dark.



Some galleries can be quite light.

An aerial photograph of a modern building with a curved, golden, textured facade. The building's surface is composed of many small, rectangular panels with a fine, grid-like pattern. The building is surrounded by greenery and a paved area. The lighting is bright, suggesting a sunny day.

Thank you for
visiting Firstsite.

See you soon!