

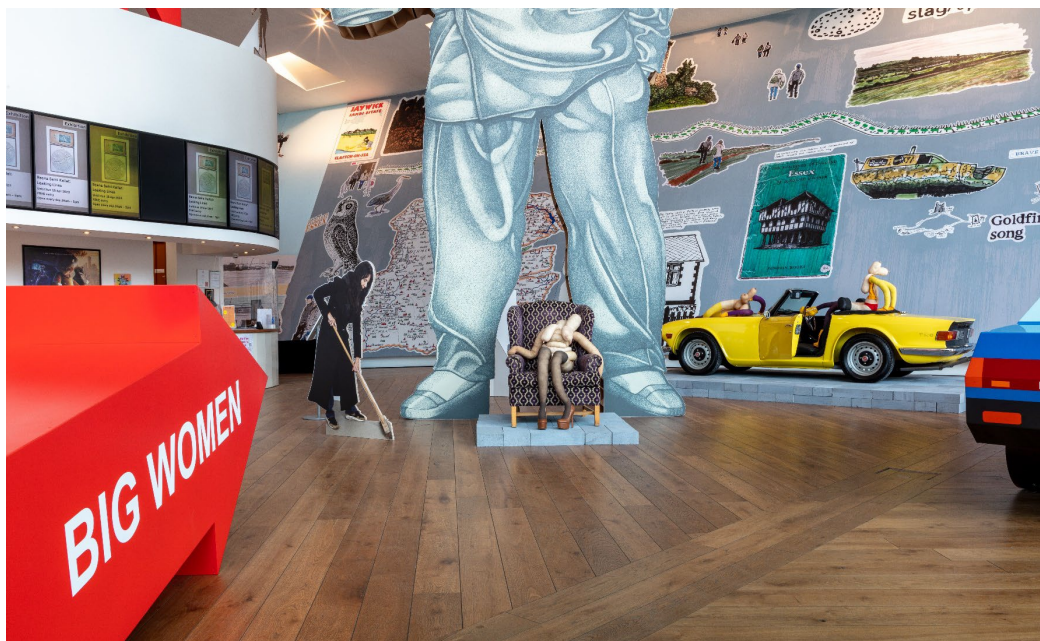
**On 09 Nov 2024, I'm going to the cinema at  
Firstsite.**



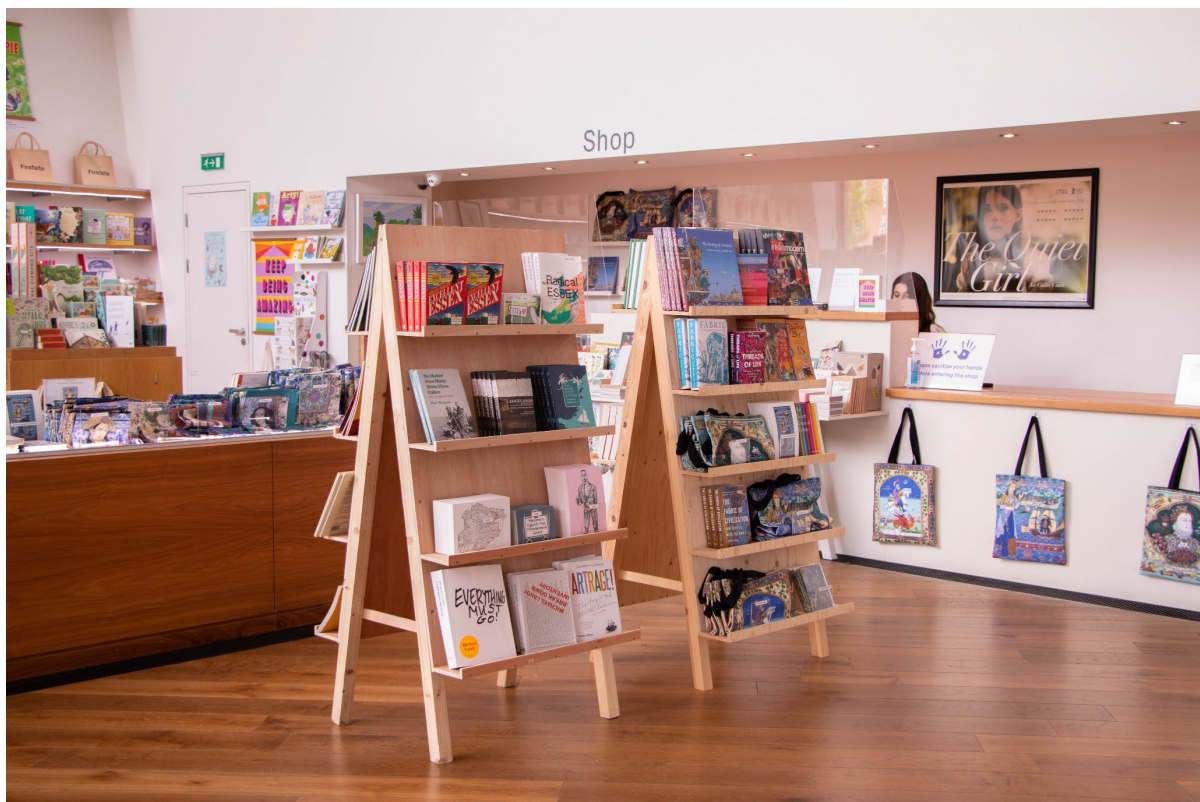
**I will need to go through the Firstsite main entrance.**



When I go into the building there will be a big sculpture of a man.



**On my left will be the Firstsite Shop.**



**When I get to the reception, I will need to get a ticket, or show my ticket that I've booked online.**



**At the Firstsite Welcome Desk, I can choose from a selection of sensory objects to take into the cinema with me.**

**Ear defenders are also available to borrow for the duration of the film.**

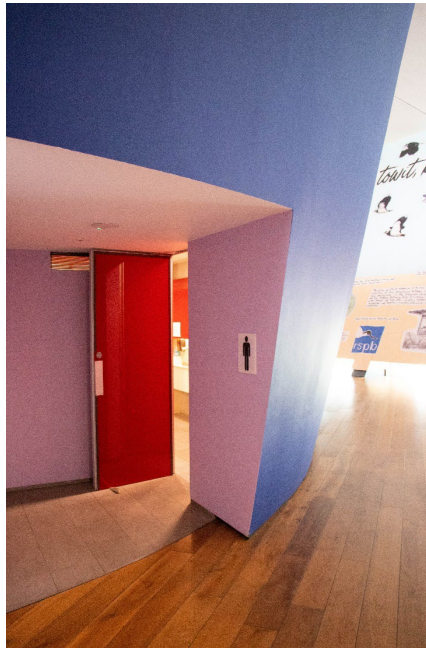
**These must be handed back to the Firstsite Welcome Desk after I have finished using them.**



I can follow the curve of the building where there is the cinema, toilets, Café and gallery spaces.



**The first toilets I will come across are either side of the blue curved cinema.**





**There are more toilets further along the building and in the café.**

**The cinema is a large blue building on my left.**

**I will need to walk down the corridor to get to the cinema entrance.**



**I will go through this door to get to the cinema.  
I may have to queue. I will need to show the  
usher my ticket that I have printed at home or  
show my ticket on a phone.**



**I will go into the cinema to watch the film.**



**I will need to find my seat and sit down.**

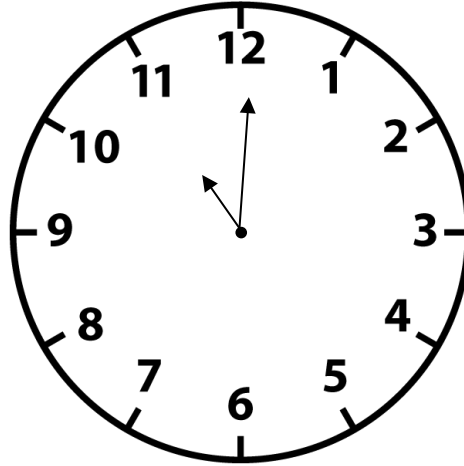


**Once I have found my seat I will watch the film.**

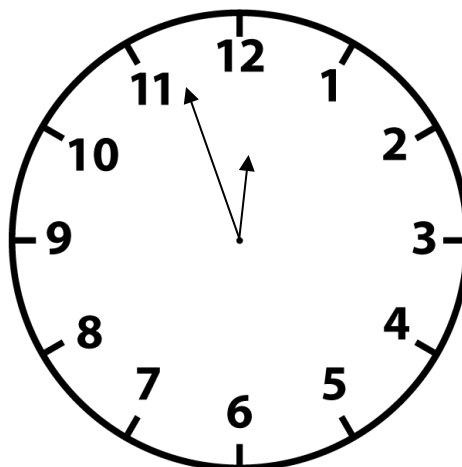
**If I want to, I can move and sit in a different seat within my allocated bubble.**



**I can go into the cinema at 11:00am and start watching the film.**



**The film will finish at 12:56pm and I will leave the cinema.**



## Detective Conan: The Million-Dollar Pentagon



With an unsolved mystery from the great Edo period, the battle for treasure begins...with Detective Conan: The Million-dollar Pentagon.

When a calling card belonging to the legendary Kid the Phantom Thief is found in an illustrious family's warehouse in Hokkaido, Conan's interest is piqued.

Why has a great thief well-known for his pursuit of precious gems set his eyes on swords dating back to the great Edo period?

Meanwhile, the discovery of a body with a cross slashed across its chest leads to the "Merchant of Death", an arms dealer who has his eyes set on an even greater treasure.