

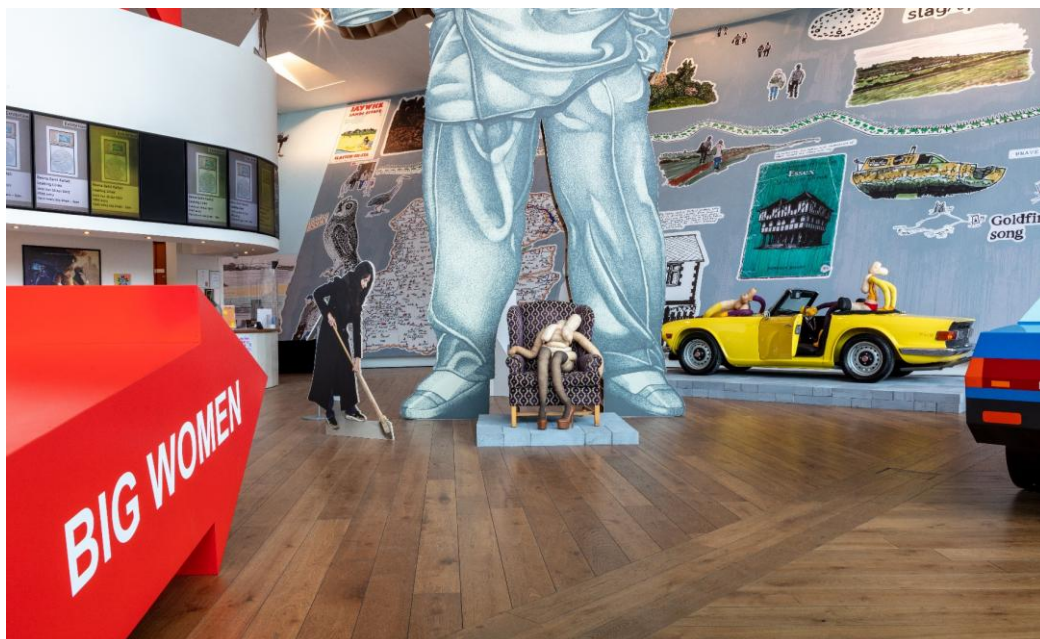
On 14 Feb 2026, I'm going to the cinema at Firstsite.



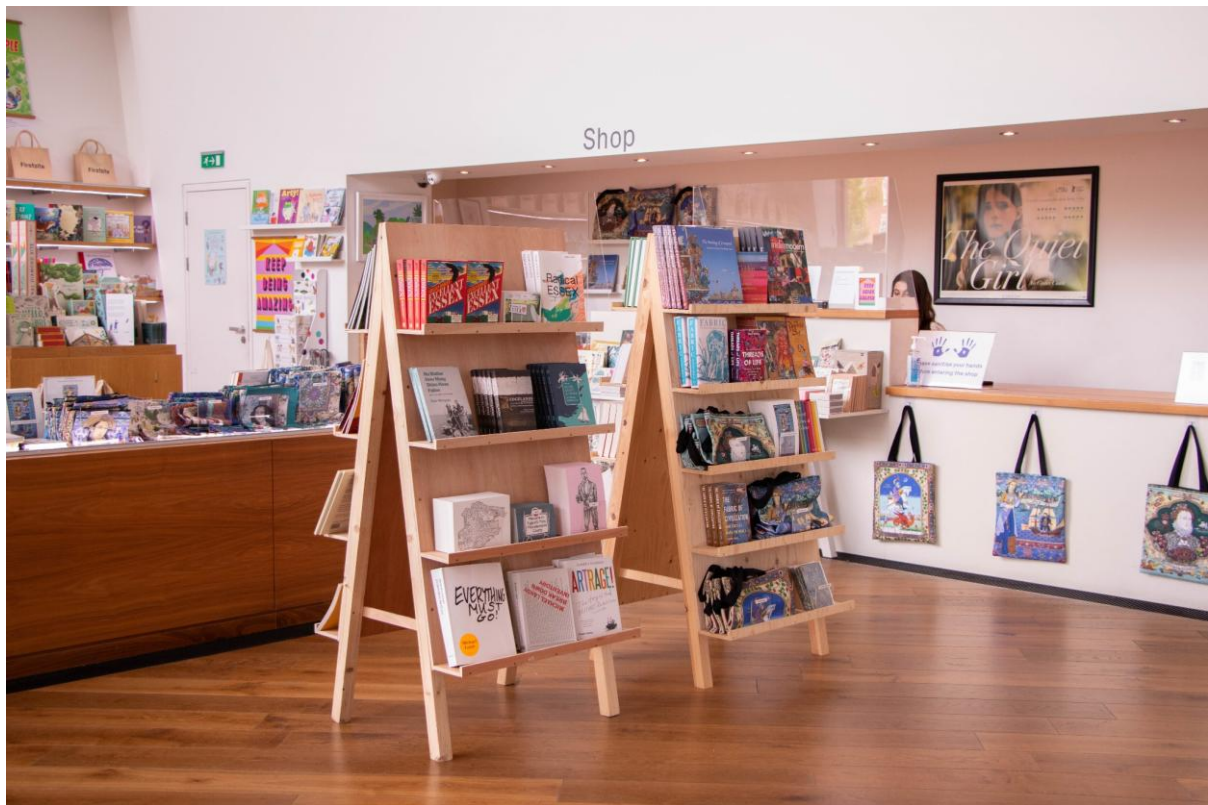
I will need to go through the Firstsite main entrance.



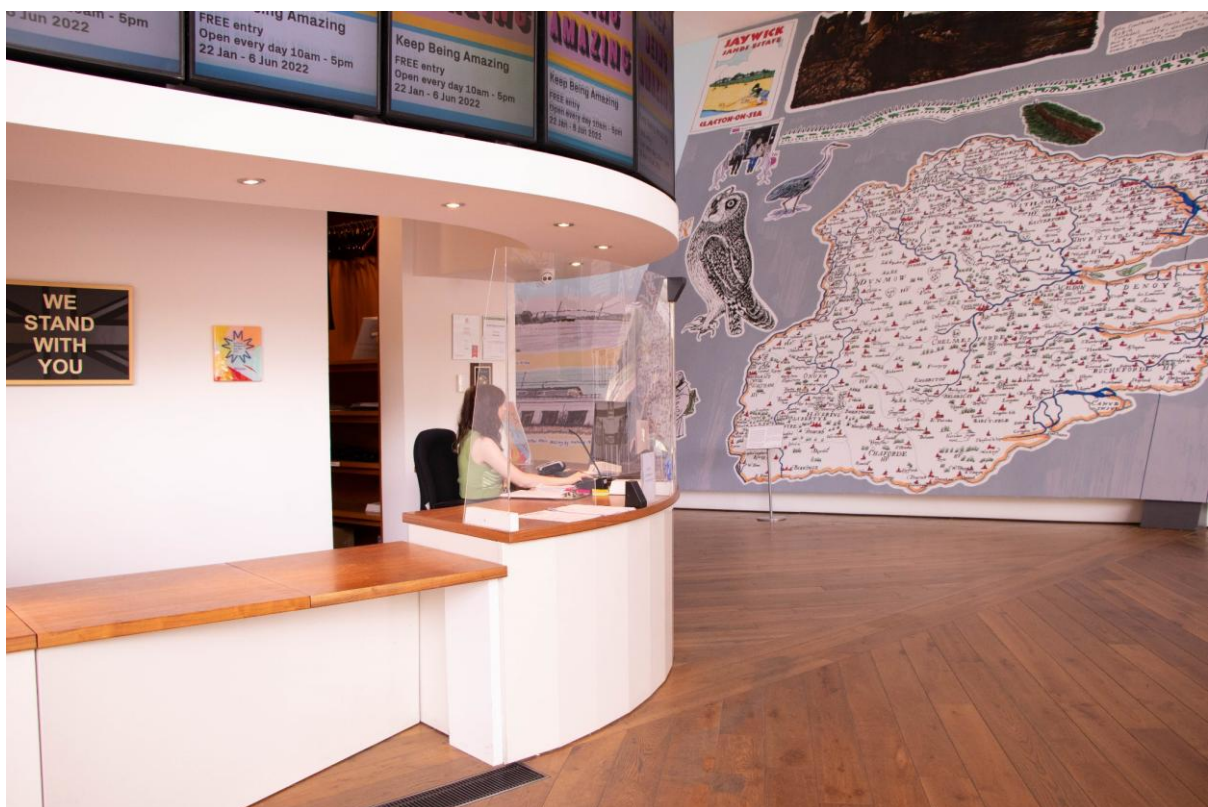
When I go into the building there will be a big sculpture of a man.



On my left will be the Firstsite Shop.



When I get to the reception, I will need to get a ticket, or show my ticket that I've booked online.



At the Firstsite Welcome Desk, I can choose from a selection of sensory objects to take into the cinema with me.

Ear defenders are also available to borrow for the duration of the film.

These must be handed back to the Firstsite Welcome Desk after I have finished using them.



I can follow the curve of the building where there is the cinema, toilets, Café and gallery spaces.



The first toilets I will come across are either side of the blue curved cinema.



There are more toilets further along the building and in the café.

The cinema is a large blue building on my left.

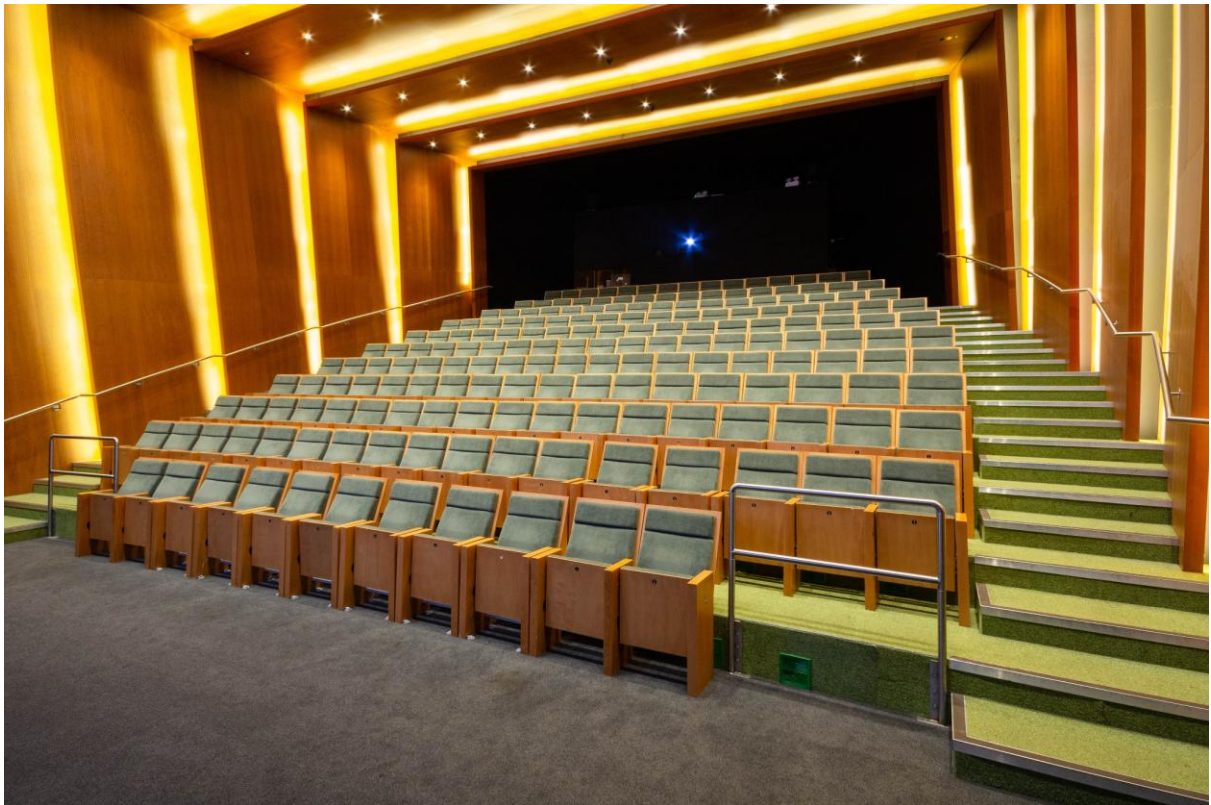
I will need to walk down the corridor to get to the cinema entrance.



**I will go through this door to get to the cinema.
I may have to queue. I will need to show the
usher my ticket that I have printed at home or
show my ticket on a phone.**



I will go into the cinema to watch the film.



I will need to find my seat and sit down.

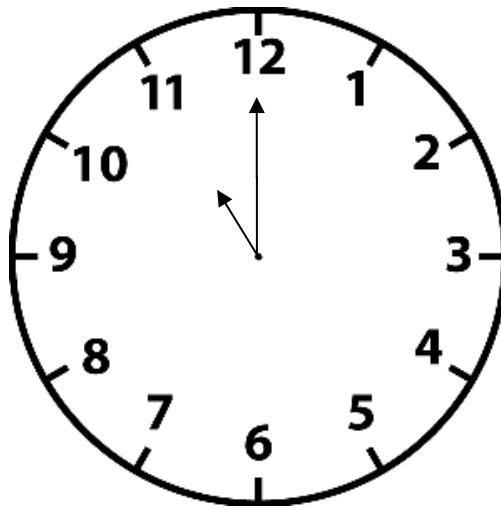


Once I have found my seat I will watch the film.

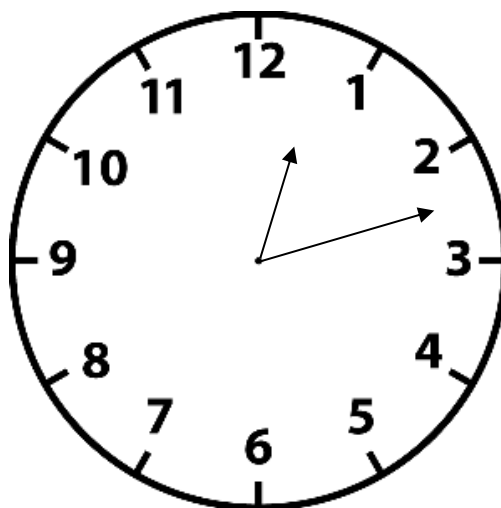
If I want to, I can move and sit in a different seat within my allocated bubble.



I can go into the cinema at 11:00am and start watching the film.



The film will finish at 12:13pm and I will leave the cinema.



Little Amelie



The world is a perplexing, peaceful mystery to Little Amélie until a miraculous encounter with chocolate ignites her wild sense of curiosity.

As she develops a deep attachment to her family's housekeeper, Nishio-san, Amélie discovers the wonders of nature.

She also delves into the emotional truths hidden beneath the surface of her family's idyllic life as foreigners in post-war Japan.